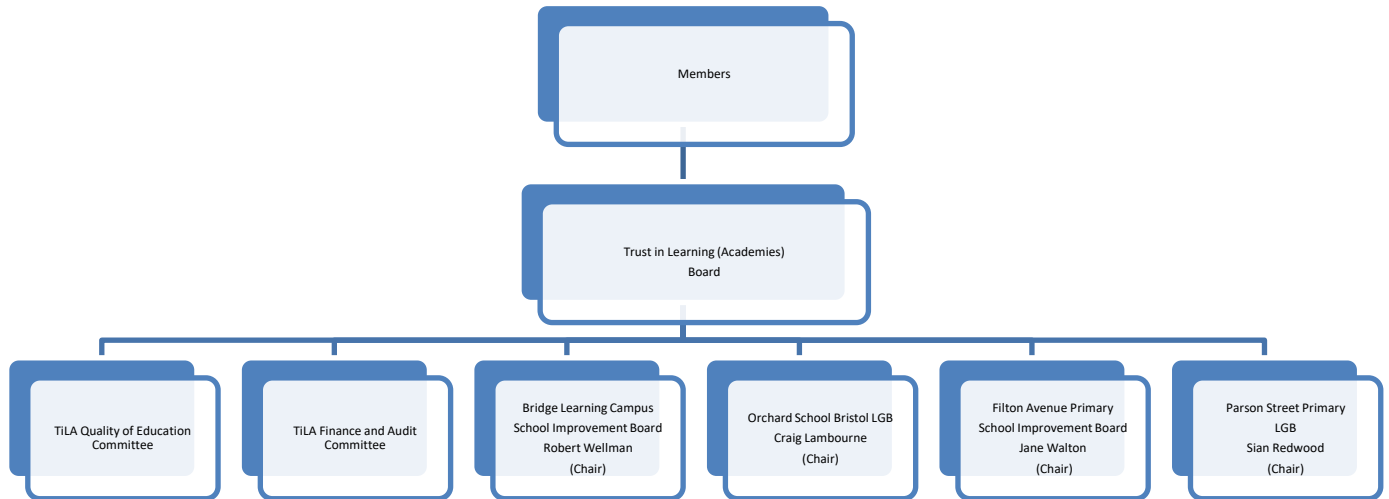


## Trust in Learning (Academies) Structure



| Members of TiLA   | Directors of TiLA Board   | Members of TiLA Quality of Education Committee   | Members of TiLA Finance and Audit Committee  |
|---|---|--|--|
| Trust in Learning<br>Gerry Rice (Chair of TiLA Board)<br>Marian Curran<br>Victoria Fitzgerald<br>Roger Opie | Andrew Baber<br>Peter Baber<br>Helen Cooper<br>Louise Donaghey<br>Mark Davies<br>Jonathan Ellis<br>Paul James<br>Caroline Jenkins<br>Craig Lambourne<br>Sian Redwood<br>Gerry Rice (Chair)<br>Jane Walton<br>Robert Wellman<br>Richard Whitburn | Richard Whitburn (Chair)<br>Mark Davies<br>Pasquale Fasulo<br>Julia Hinchliffe<br>Louise Hopcroft<br>Paul James<br>Rupert Maule<br>David Spence<br>Gerry Rice<br>Anne Rutherford | Andrew Baber (Chair)<br>Peter Baber<br>Helen Cooper<br>Mark Davies<br>Jonathan Ellis |

### TiLA Central Team

Drw Cannon – Director of Finance and Operations  
 David Spence – Director of Learning  
 Sue Elliott – Director of HR and Communications  
 Clare Anderson – Company Secretary and Clerk to the Directors

### Headteachers

Julia Hinchliffe – Orchard School Bristol  
 Louise Hopcroft – Parson Street Primary School  
 Rupert Maule – Bridge Learning Campus  
 Anne Rutherford – Filton Avenue Primary School